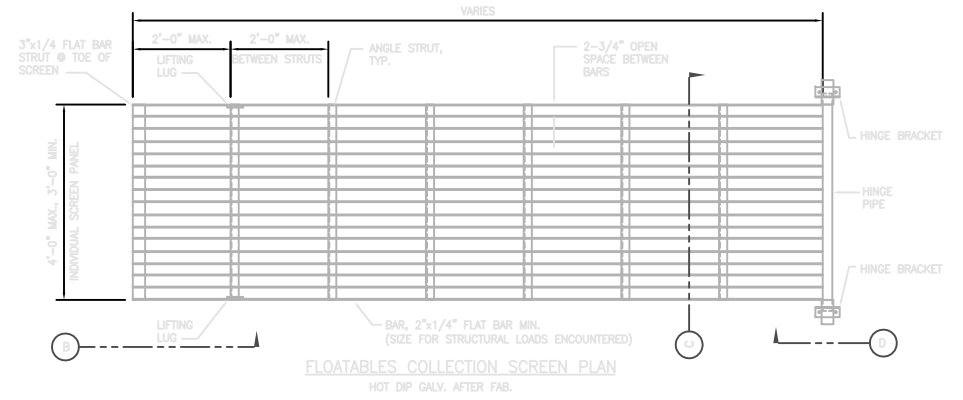
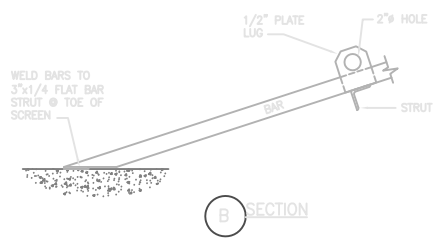


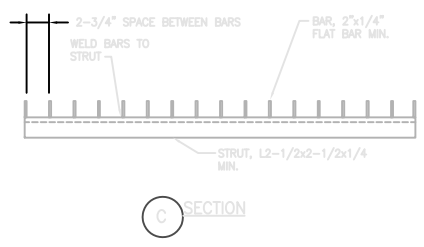
PLAN



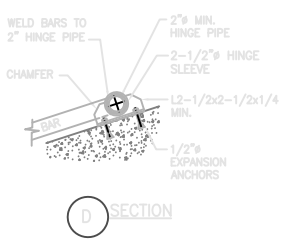
FLOATABLES COLLECTION SCREEN PLAN  
HOT DIP GALV. AFTER FAB.



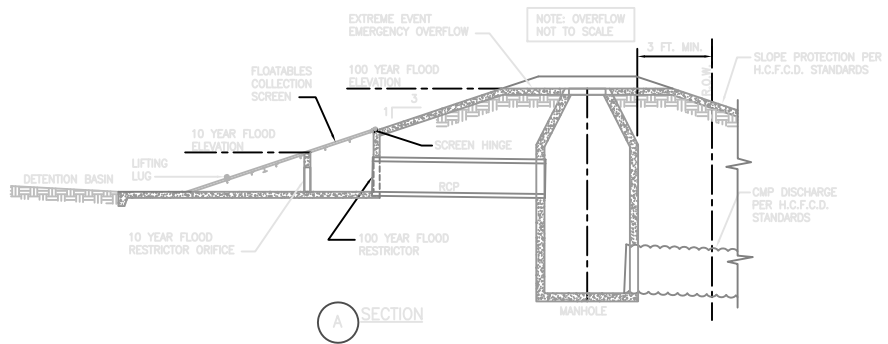
B SECTION



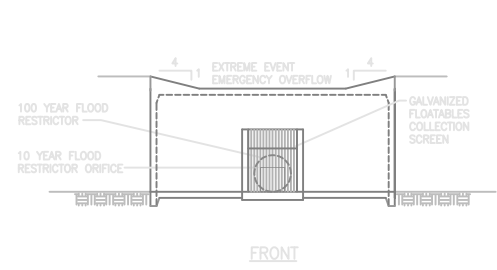
C SECTION



D SECTION



A SECTION



FRONT

DESIGN CONSIDERATIONS FOR ENGINEER

- DESIGN FOR ACCESSIBILITY BY H.C.F.C.D. MAINTENANCE PERSONNEL.
- SCREEN TO BE DESIGNED FOR HAND RAKING OF DEBRIS TO TOP OF STRUCTURE FOR DEWATERING AND TRUCK PICK UP.
- 4' MINIMUM CONCRETE PAVED ACCESS ON ALL SIDES FOR MAINTENANCE PERSONNEL.
- 3:1 MAXIMUM SLOPE FOR TRASH COLLECTION SCREEN AND CONCRETE PAVING.
- PROVIDE ALL-WEATHER ACCESS ROAD TO SCREEN AND DEBRIS REMOVAL SITE.
- SCREEN SIZE AND NET OPENING AREA TO ALLOW FLOW RATE OF 1.0 CFS THROUGH SCREEN, ASSUMING NO BLINDING. SIZE AREA BELOW RESTRICTOR WALL FOR 10 YEAR FLOW RATE AND OVERALL SCREEN AREA FOR 100 YEAR FLOW RATE.  
$$\text{MINIMUM SCREEN AREA (SQ. FT.)} = \frac{Q \text{ (CFS)}}{.02}$$
- SCREEN DESIGN MAY REQUIRE MULTIPLE 4' WIDE SCREEN PANELS.

NO.	REVISION	DATE	BY

HARRIS COUNTY  
PUBLIC INFRASTRUCTURE DEPARTMENT  
ENGINEERING DIVISION



FOR INTERIM REVIEW ONLY  
DOCUMENT INCOMPLETE:  
NOT INTENDED FOR CONSTRUCTION,  
BIDDING, OR PERMIT PURPOSES  
ENGINEER: PE  
P.E. SERIAL No. SERIAL  
DATE: DATE

PROJECT INFO		FILE NO.
DESIGN BY CADDOP	DESK DESCRIPTION	JOB NO. JOB NO.
DESIGN N.T.S.	DATE	FILE NO. FILE NO.
DATE	APPROVED BY	DATE X/N

